

Ross Valley Fire Different Types of Governing Models

November 12, 2025

Jason Fried – Marin LAFCo

Definitions

JPA – Joint Powers Agreement

MWPA – Marin Wildfire Prevention Authority

MSR – Municipal Service Review

RVFA – Ross Valley Fire Authority

RVFD – Ross Valley Fire Department

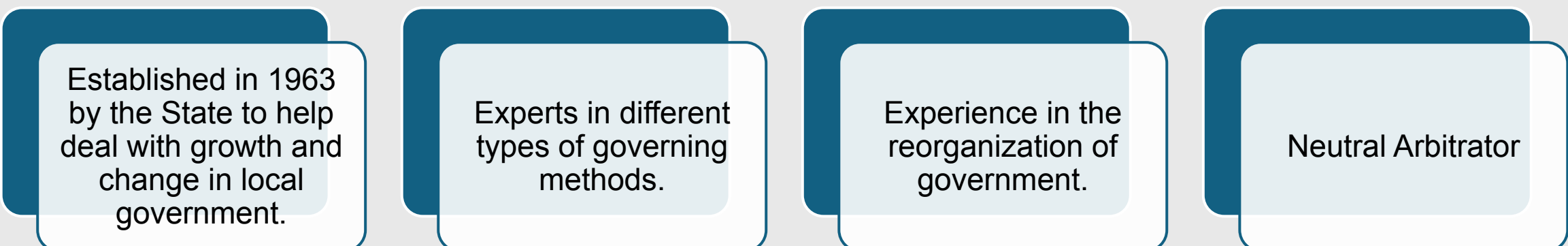
SHFPD – Sleepy Hollow Fire Protection District

SMFPD – Southern Marin Fire Protection District

SOI – Sphere Of Influence

TFPD – Tiburon Fire Protection District

LAFCo and Its Role



Established in 1963
by the State to help
deal with growth and
change in local
government.

Experts in different
types of governing
methods.

Experience in the
reorganization of
government.

Neutral Arbitrator

History of RVFA

In 1956, SHFPD signed a service agreement with the Town of San Anselmo for fire protection based on assessed values and shared expenses. This agreement lasted until 1976, when a special tax to re-establish independent fire protection services for SHFPD was passed.

In 1979, SHFPD and San Anselmo entered into a new 25-year agreement, with the costs based on a percentage of total labor expenses.

In 1982, San Anselmo and Fairfax fire departments consolidated, forming the Ross Valley Fire Service Joint Powers Authority.

In 2004, SHFPD signed an “evergreen” contract with RVFD. However, in 2010, SHFPD achieved full voting-member status within the RVFD.

In 2012, Ross became a voting member of the JPA.

Other LAFCo Fire Reorganizations

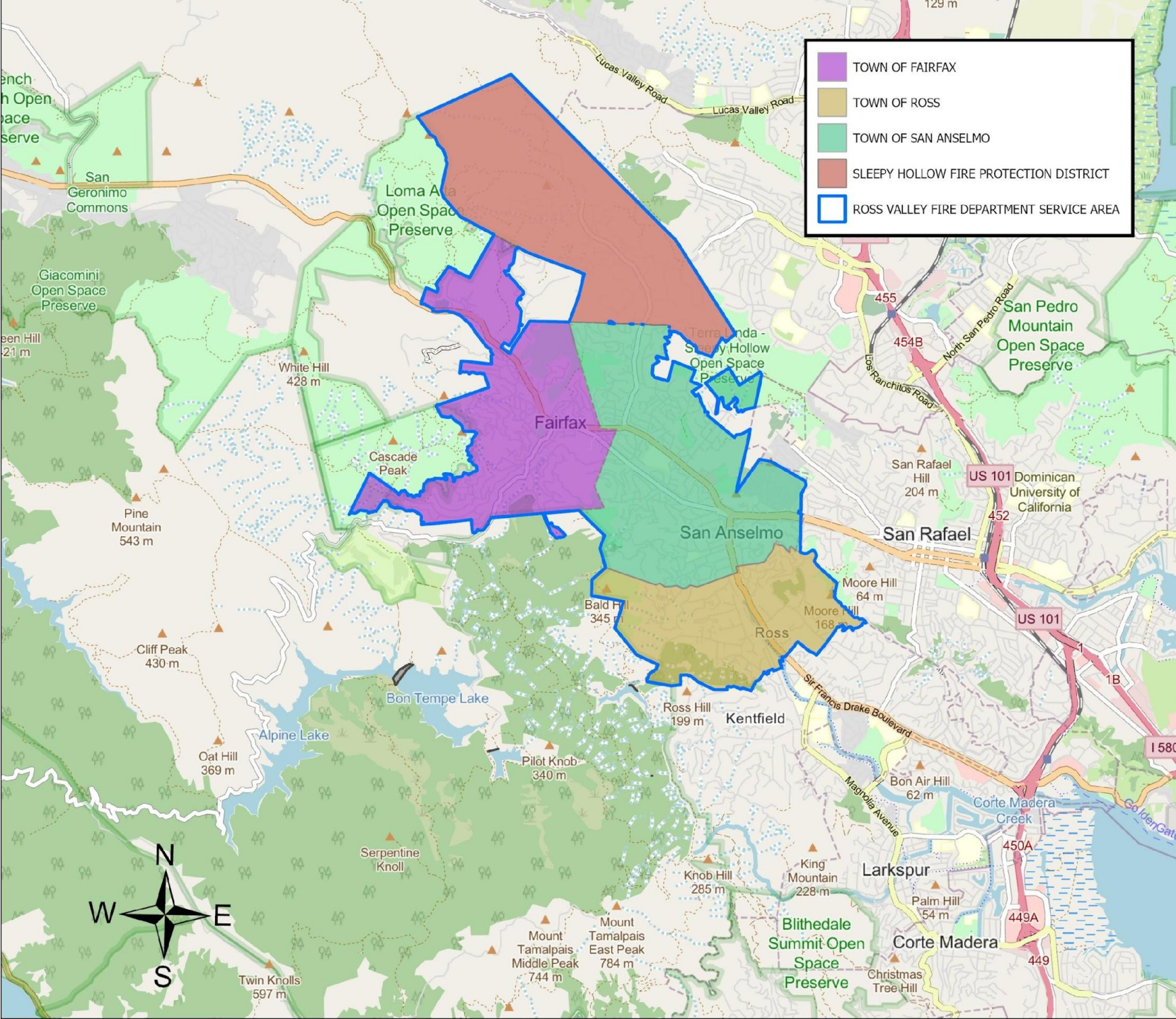
Southern Marin Fire Protection District annexation of the City of Mill Valley

- In 2020, SMFPD/City of Mill Valley reached out to LAFCo to discuss the possible annexation of Mill Valley into SMFPD.
- After almost 2 years of work, an application is submitted and approved by LAFCo.

Tiburon Fire Protection District annexation of the City of Belvedere.

- The City, since the 1980s, has been contracting for services with TFPD.
- Currently studying the possibility of having TFPD annex the City.

Current Boundaries in the Area



Different Type of Ways to Get Fire Services



Stand alone

JPA

District
(Appointed
Board or
Independently
Elected)

Contract for
Services

Governing Body

JPA

Each agency that is a member of the JPA appoints members to the board based on rules established by the JPA agreement.

Appointed District Board

Upon creation of district rules, establish who gets to make appointments to the Board and who is eligible to serve on the Board. In this case, the RVFA rules for appointing its board members could be copied, or different rules could be established.

Elected District Board

Registered voters in the district run for and vote for board members to serve on the board for designated terms. The size of the board can vary based on parameters set in state government code.

Governmental Decision Making

JPA

- While day-to-day decisions may be made by the JPA board of directors, larger discussions may need to go back to each member of the JPA for approval. Depending on JPA rules, all member agencies may need to say yes for it to move forward.

District

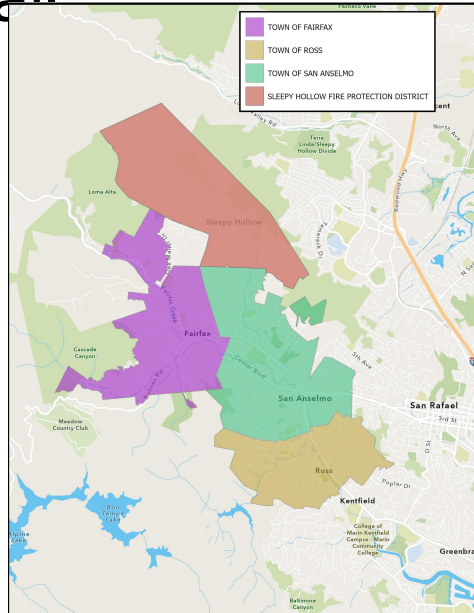
- All discussions and decisions stay within the district board of directors. What the Board decides is the final decision unless it requires a public vote, such as a bond measure or special assessment.

General Public Decision Making

In some cases (special assessment or bond), approval may be needed from the general public.

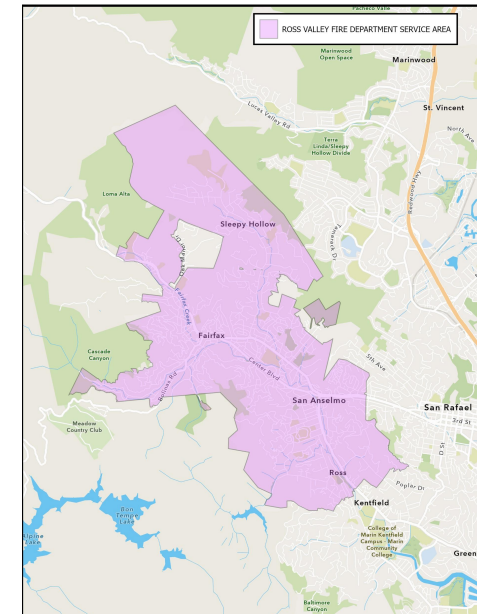
JPA

- Each jurisdiction must individually put the measure on the ballot.
- The voters in each area decide, and depending on the rules of JPA, if all areas but one vote yes, it may still fail



District

- The district puts the measure on the ballot across the entire region.
- The voters of the entire area vote as one block with enough yes votes approving the measure.



How Budgeting and Financing Work

JPA



The JPA establishes how much each member pays to the JPA for its general operations. The JPA may also have rules on who is responsible for covering specific costs of the joint work.



If additional funding or special funding is needed, the JPA makes request to one or more member agencies. Each agency then decides on its own if it will grant that funding.



The JPA Board then decides how to spend funds for shared costs.

District



Prior to the district being established, funding sources are established and known. In this case, all four agencies establish a tax exchange agreement, and agreements are made on the transfer of other assets.



All decisions are made by the Board of Directors. No actions are needed by others, unless voter approval is needed.



The new district must operate on its own; it can not simply go back to another agency to ask for more funds. If more funds are needed likely need to get grants or ask voters for additional funding

Change to District Model Impact to...

Towns



While immediate cost savings are not likely to happen, it will allow for the separation of rising fire costs in town budgets.



Towns remove themselves from being responsible for fire services, with the understanding that some items like MWPA may still stay with the town until reauthorization occurs.



The towns and new district may need to go to the ballot for different special assessments in the same election, which could cause fatigue with new assessments with the voters.

Special District



Appointed Board model likely does not have a major impact on how it operates. Some minor impacts could occur.



The Independent Elected Board will likely have major impacts on the Sleep Hollow board and community.



Should, in the future, the RVFA decide to review a district model, LAFCo would request some time to discuss with SHFPD impacts prior to formally starting any review process.

QUESTIONS?